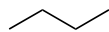


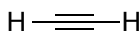
# Basic Functional Groups



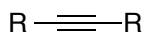
alkane  
(butane)



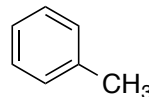
alkene



alkyne  
(acetylene)



(R = H, alkyl, aryl)



benzene ring  
(phenyl, aryl, arene)

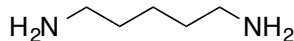
(toluene)



amine  
(R = H, alkyl, aryl)



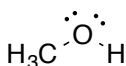
ammonia



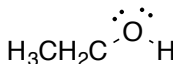
cadavarine



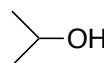
alcohol  
(R = Alkyl, aryl)



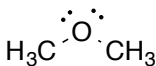
methanol  
(methyl alcohol)



ethanol  
(ethyl alcohol)



isopropanol  
(isopropyl alcohol)



ether  
(dimethyl ether)

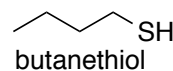


diethyl ether



cyclic ether  
(oxetane)

RSH  
thiol  
R = alkyl, aryl



butanethiol



alkyl halide  
X = F, Cl, Br or I  
R = alkyl, aryl



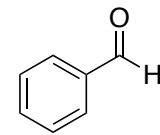
iodomethane  
(methyl iodide)



aldehyde  
(R = H, alkyl or aryl)



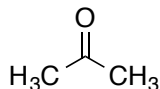
formaldehyde



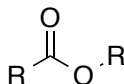
benzaldehyde



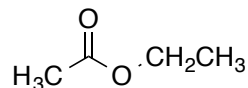
ketone  
(R = alkyl or aryl)



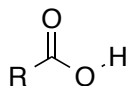
acetone



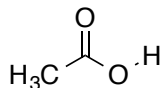
ester  
(R = alkyl or aryl)



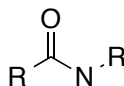
ethyl acetate



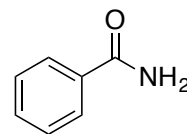
carboxylic acid  
(R = alkyl or aryl)



acetic acid  
(vinegar)



amide  
(R = H, alkyl or aryl)



benzamide