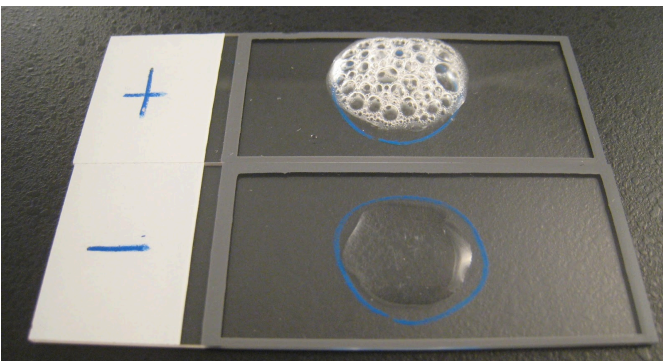


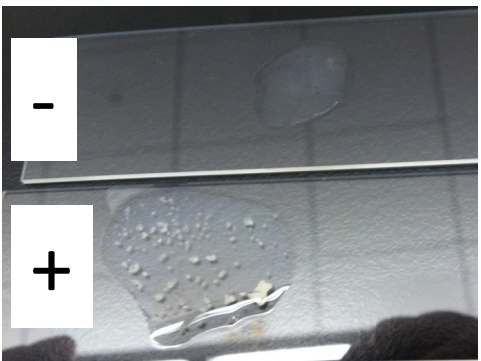
Ex017 – *Staphylococcus*

Catalase Test



+ = bubbles
- = No bubbles

Coagulase Test (slide)



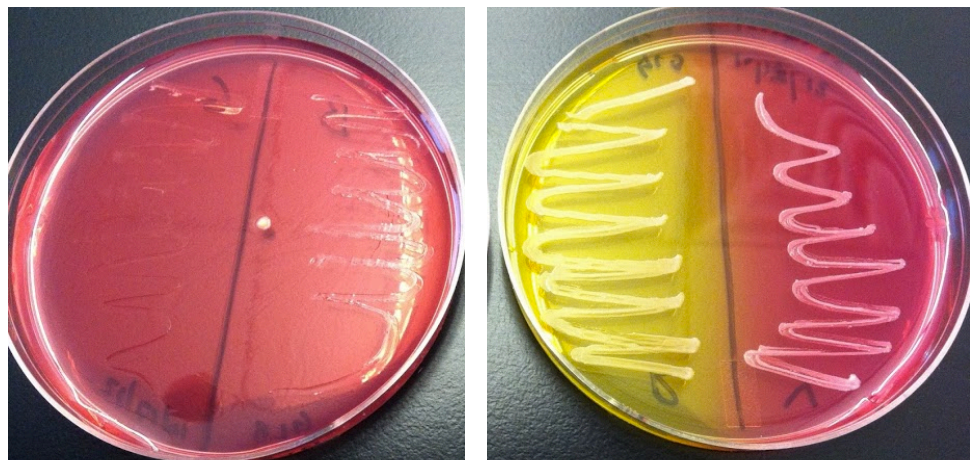
+ = clotting with a clear background
- = no clotting, smooth mixture w/ milky background

Glucose Fermentation Test



+ = Media turns yellow
- = Media stays red/orange

Mannitol Salt Agar (MSA) Plate



Salt Tolerance Test: + Bacteria grows = Bacteria tolerates high salt
- Bacteria inhibited = bacteria does not tolerate salt

Mannitol Fermentation Test: + Media turns yellow
- Media stays red/pink

Ex017 – *Staphylococcus*

Pigmentation Test on TSA plates (can also be done on blood agar plate)



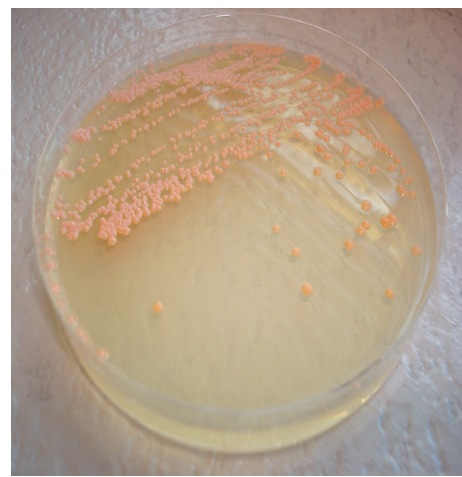
Staphylococcus epidermidis
pigment is white



Staphylococcus aureus pigment is white/off white

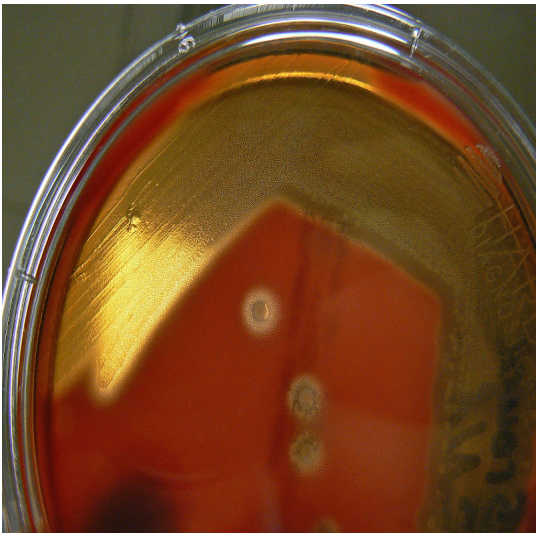


Micrococcus luteus pigment is yellow



Micrococcus roseus pigment is pink

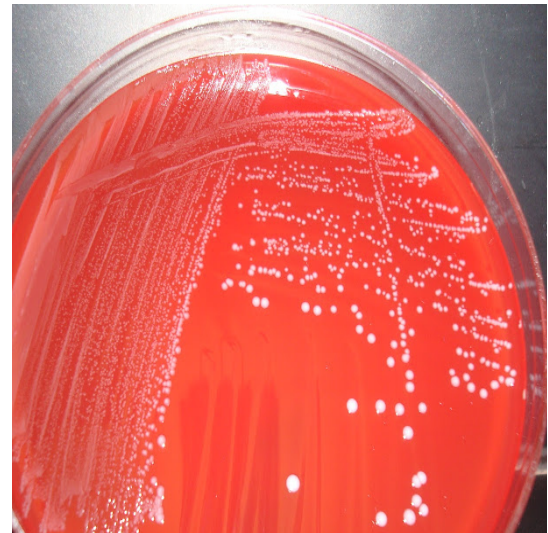
Hemolysis Test on Blood Agar



Beta hemolysis = complete clearing of red blood cells. Clear yellow halo around bacteria



Alpha hemolysis = partial clearing of red blood cells. Olive green discoloration around bacteria



Gamma hemolysis = no clearing of red blood cells. No discoloration around bacteria