

Ex018 – *Streptococcus*

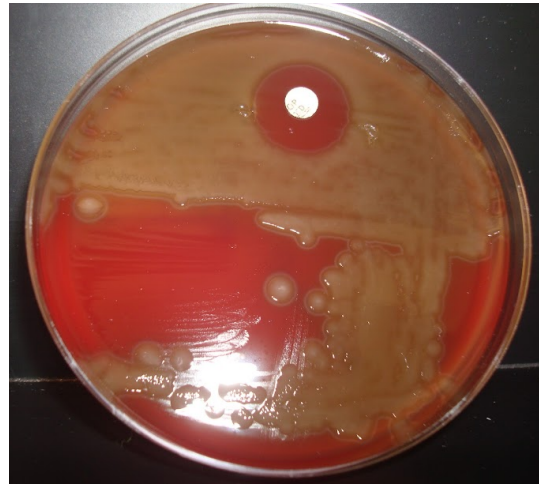
Bile Esculin Hydrolysis Test



+ = Media turns black

- = Media stays light brown

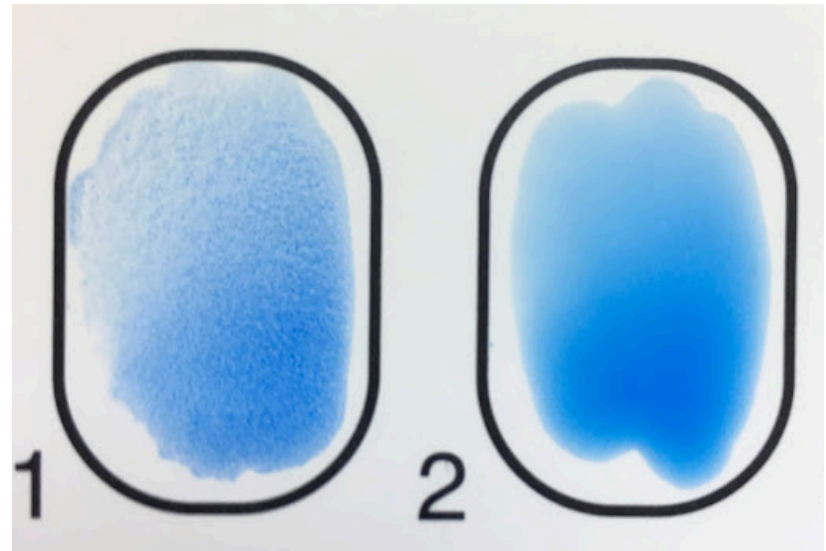
Optochin Sensitivity Test



Sensitive = Inhibition of bacteria around optochin disk.

Resistant = Bacteria grow up to edge of optochin disk

Lancefield Grouping by Latex agglutination



+ = Agglutination (clumping) indicates an identification of the Streptococcal isolate for the Lancefield group

- = No visible agglutination indicates a negative reaction