

F Blues (Concert)

Practice order:

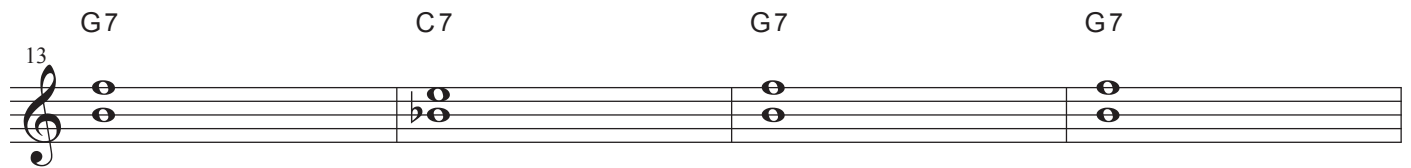
1. Get used to using G minor pentatonic through the form (G, Bb, C, D, F).
 2. Play the triad (1,3,5) and try different inversions. Try improvising using only triad notes.
 3. Learn the arpeggios and play them in various order: up (1,3,5,7,), down (7,5,3,1), up one down the next, etc... (Example 1).
 4. Guide tones connecting and identifying the 3rds and 7ths of the chords. (Example 2).
 5. Learn the scales associated with the chords in the song. Mixolydian and dorian minor. (Example 3)
 6. Connect 3rds and 7ths with scale tones in between. Connect by half step when possible.
- *Write out your own solos with guide tone connections. (Example 4)

Example #1 G7



Guide Tones through G Blues (connecting 3rds and 7ths)

Example #2



Example #3

Musical notation for Example #3, measures 25-32. The notation is in treble clef and 4/4 time. The melody consists of eighth-note patterns. Chord changes are indicated above the staff: G7 (measures 25-26), C7 (measures 27-28), G7 (measures 29-30), G7 (measures 31-32). Measure numbers 25, 29, and 33 are marked at the beginning of their respective lines.

Example #4

Musical notation for Example #4, measures 37-44. The notation is in treble clef and 4/4 time. The melody consists of eighth-note patterns. Chord changes are indicated above the staff: G7 (measures 37-38), C7 (measures 39-40), G7 (measures 41-42), G7 (measures 43-44). Measure numbers 37, 41, and 45 are marked at the beginning of their respective lines.