

# F Blues (Concert)

Practice order:

1. Get used to using G minor pentatonic through the form (G, Bb, C, D, F).
2. Play the triad (1,3,5) and try different inversions. Try improvising using only triad notes.
3. Learn the arpeggios and play them in various order: up (1,3,5,7,), down (7,5,3,1), up one down the next, etc... (Example 1).
4. Guide tones connecting and identifying the 3rds and 7ths of the chords. (Example 2).
5. Learn the scales associated with the chords in the song. Mixolydian and dorian minor. (Example 3)
6. Connect 3rds and 7ths with scale tones in between. Connect by half step when possible.

\*Write out your own solos with guide tone connections. (Example 4)

Example #1 G7

C7

G7

G7



C7

C7

G7

G7

5



Amin7

D7

G7

D7

9



Guide Tones through G Blues (connecting 3rds and 7ths)

Example #2

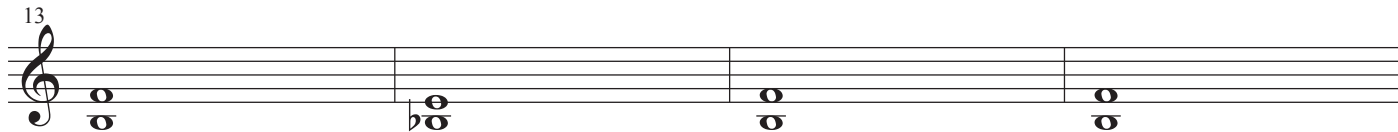
G7

C7

G7

G7

13



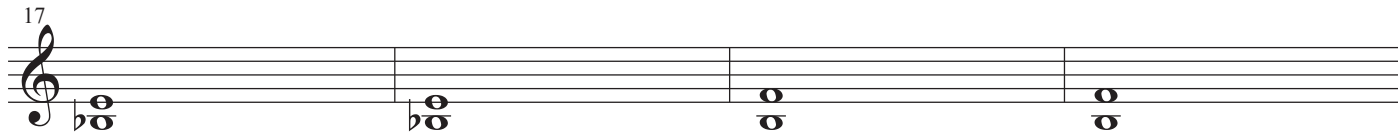
C7

C7

G7

G7

17



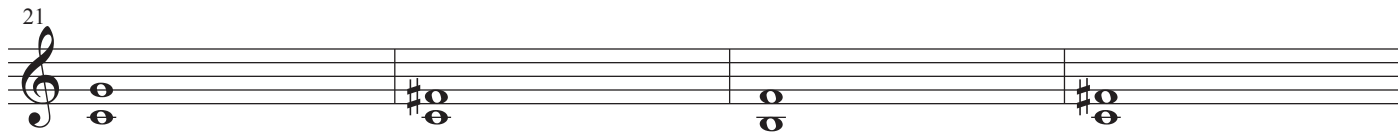
Amin7

D7

G7

D7

21



Example #3

Musical notation for Example #3, measures 25-33. The notation is on a single treble clef staff. Measure numbers 25, 29, and 33 are indicated at the start of their respective lines. Chord symbols are placed above the staff: G7, C7, G7, G7 (measures 25-28); C7, C7, G7, G7 (measures 29-32); Amin7, D7, G7, D7 (measures 33-36). The melody consists of eighth and quarter notes, with some accidentals (flats and sharps).

Example #4

Musical notation for Example #4, measures 37-45. The notation is on a single treble clef staff. Measure numbers 37, 41, and 45 are indicated at the start of their respective lines. Chord symbols are placed above the staff: G7, C7, G7, G7 (measures 37-40); C7, C7, G7, G7 (measures 41-44); Amin7, D7, G7, D7 (measures 45-48). The melody includes eighth notes, quarter notes, and a half note, with various accidentals and rests.