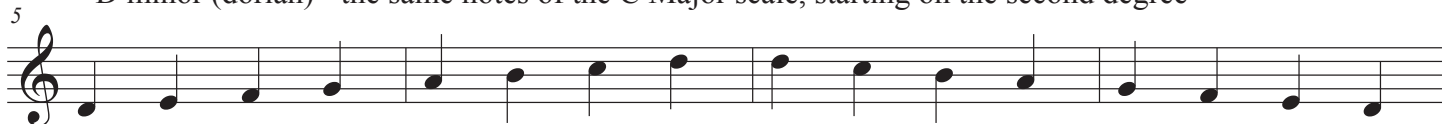


# Major, Dorian and Mixolydian Scales

C Major



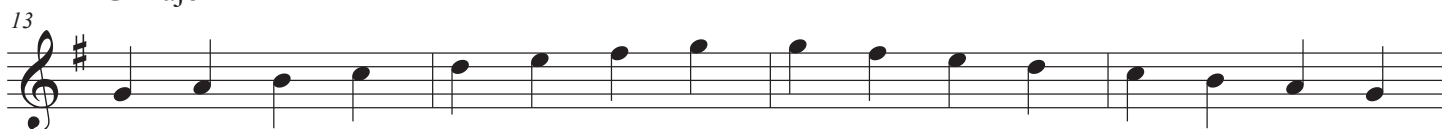
D minor (dorian) - the same notes of the C Major scale, starting on the second degree



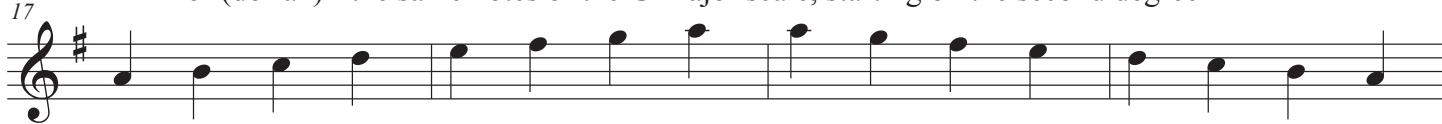
G dominant (mixolydian) - the same notes of the C Major scale, starting on the fifth degree



G Major



A minor (dorian) - the same notes of the G Major scale, starting on the second degree



D dominant (mixolydian) - the same notes of the G Major scale, starting on the fifth degree

